



SAILING INSTRUCTIONS

2022 MSC Regatta incorporating THE 2022 L26 KZN Regional Championship

Dates: 02 July 2022 to 08 July 2022

Venue: Point Yacht Club

Organising Authority: L26 Class Association in conjunction with the Point Yacht Club with the consent of SA Sailing.

SAILING INSTRUCTIONS

1 COMMUNICATIONS WITH COMPETITORS

- 1.1 Notices to competitors will be posted on the Official Notice Board located at Point Yacht Club.
- 1.2 The race office is located at Point Yacht Club, (Cellphone number: 084 208 2404, Email address: members@pyc.co.za, Physical address: Maritime Place, Point).
- 1.3 [DP] While racing, except in an emergency, a boat shall not make voice or data transmissions and shall not receive voice or data communication that is not available to all boats.

2 CHANGES TO SAILING INSTRUCTIONS

Any change to the sailing instructions will be posted no later than 90 minutes before the first start on the day it will take effect, except that any change to the schedule of races will be posted by 19h00 on the day before it will take effect.

3 CODE OF CONDUCT

[DP] Competitors and support persons shall comply with reasonable requests from race officials.

4 SIGNALS MADE ASHORE

- 4.1 Signals made ashore will be displayed at Point Yacht Club Main Club (harbour).

- 4.2 When flag AP is displayed ashore, "1 minute" is replaced with "not less than 90 minutes" in Race Signals AP.
- 4.3 [DP] Flag D with one sound means "Boats may leave the harbour/shore". Boats are requested not to leave the harbour/shore until this signal is made. The warning signal will not be made before the scheduled time or less than 90 minutes after flag D is displayed."

5 CLASS FLAGS

Class flags and the order of starting will be posted before the close of registration.

6 RACING AREA

The racing area is offshore Durban.

7 COURSES

The diagram(s) in SI Addendum 1 show(s) the courses, including the approximate angles between legs, the order in which marks are to be passed, and the side on which each mark is to be left.

8 MARKS

A description of all marks will be posted before the close of registration.

9 THE START

- 9.1 The starting line will be between a staff displaying an orange flag on the signal vessel at the starboard end and the course side of the port-end starting mark.
- 9.2 To alert boats that a race or sequence of races will begin soon, the orange starting line flag will be displayed with one sound five minutes before a warning signal is made.
- 9.3 [DP] Boats whose warning signal has not been made shall avoid the starting area during the starting sequence for other races.
- 9.4 A boat that does not start within 4 minutes after her starting signal will be scored Did Not Start without a hearing. This changes RRS A5.1 and A5.2.

10 CHANGE OF THE NEXT LEG OF THE COURSE

To change the next leg of the course, the race committee will lay a new mark (or move the finishing line) and remove the original mark as soon as practicable. When in a subsequent change a new mark is replaced, it will be replaced by an original mark.

11 THE FINISH

The finishing line will be between a staff displaying a blue flag on the race committee vessel at the starboard end and the course side of the port-end finishing mark.

12 PENALTY SYSTEM

12.1 For the Multihull classes, RRS 44.1 is changed so that the Two-Turns Penalty is replaced by the One-Turn Penalty.

13 TIME LIMITS

Boats failing to finish within 20 minutes after the first boat in her class sails the course and finishes, and not subsequently retiring, being penalised or given redress, will be scored Time Limit Expired (TLE) without a hearing. A boat scored TLE shall be scored points for the finishing place one more than the points scored by the last boat that finished within this time limit. This changes RRS 35, A5.1, A5.2 and A10.

14 HEARING REQUESTS

14.1 For each class, the protest time limit is 120 minutes after the last boat in that class finishes the last race of the day or the race committee signals no more racing today, whichever is the later. The time will be posted on the official notice board.

14.2 However, if racing is postponed under Race Signal AP over H, then for each class, the protest time limit for races completed so far that day is 90 minutes after the last boat in that class finishes the last race completed, or the race committee signalled AP over H, whichever was the later.

14.3 Hearing request forms may be downloaded from www.sailing.org.za .

14.4 Notices will be posted no later than 30 minutes after the protest time limit to inform competitors of hearings in which they are parties or named as witnesses. Hearings will be held remotely as instructed by the race office, beginning at the time posted.

15 SCORING

15.1 4 races are required to be completed to constitute a series.

15.2 (a) When fewer than 5 races have been completed, a boat's series score will be the total of her race scores.

(b) When from 5 to 9 races have been completed, a boat's series score will be the total her race scores excluding her worst score.

(c) When 10 or more races have been completed, a boat's series score will be the total of her race scores excluding her two worst scores.

16 SAFETY REGULATIONS

16.1 [DP] All multihull competitors shall wear a personal flotation device capable of supporting a 5 kg steel weight at all times while afloat, except briefly while changing or adjusting clothing or personal equipment.

16.2 [DP] A boat that retires from a race shall notify the race committee at the first reasonable opportunity.

17 REPLACEMENT OF CREW OR EQUIPMENT

17.1 [DP] Substitution of competitors is not allowed without prior written approval of the race committee.

17.2 [DP] Substitution of damaged or lost equipment will not be allowed unless approved by the race committee. Requests for substitution shall be made to the committee at the first reasonable opportunity, which may be after the race.

18 EQUIPMENT AND MEASUREMENT CHECKS

18.1 A boat or equipment may be inspected at any time for compliance with the class rules, notice of race or sailing instructions.

18.2 [DP] When instructed by a race official on the water, a boat shall proceed to a designated area for inspection.

19 SUPPORT PERSON VESSEL

[DP] Support person vessels shall stay outside of the course (as shown on the course diagram) and at least 150 m from boats racing.

20 TRASH DISPOSAL

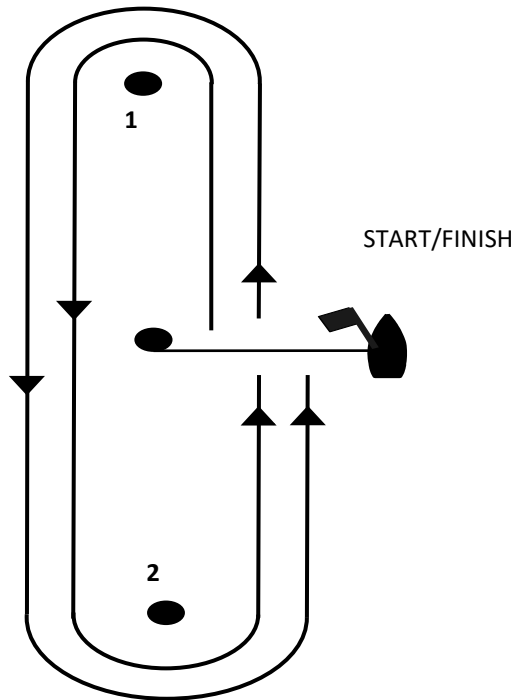
Trash may be placed aboard official or support person vessels.

ADDENDUM 1: ILLUSTRATIVE COURSES

COURSE 1 – NUMERAL PENNANT 1 / NUMBER 1

A Windward-Leeward Course

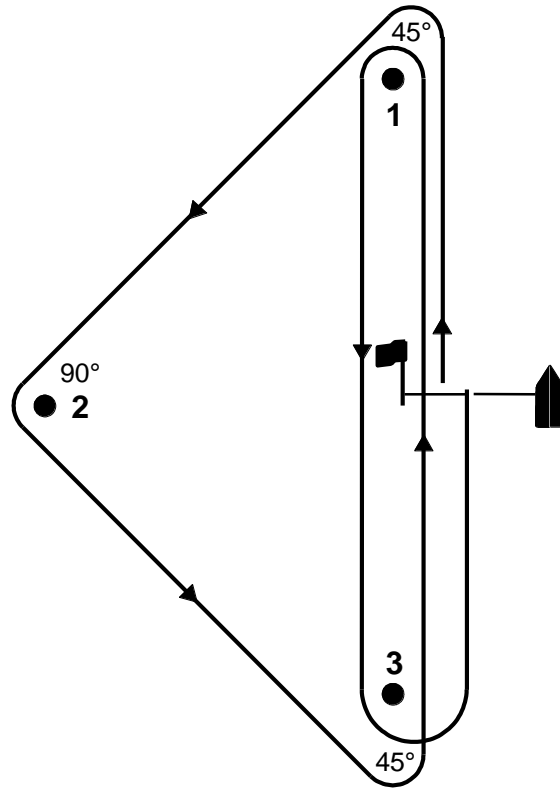
Start – 1 – 2 – 1 – 2 – Finish



COURSE 2 – NUMERAL PENNANT 2 / NUMBER 2

A Triangle-Windward-Leeward- Course

Start – 1 – 2 – 3 – 1 - 3 – Finish



Course 3 – Numeral Pennant 3/ Number 3

Medium Distance Race

Distance races may be sailed and the details of such races shall be posted on the Regatta Notice Board the day prior to the race being scheduled.