



POINT YACHT CLUB
VASCO da GAMA IN-PORT RACE
SAILING INSTRUCTIONS

1. RULES

- 1.1 The series will be governed by the World Sailing rules as defined in the Racing Rules of Sailing (RRS) 2020-2024.
- 1.2 Boats participating in these races shall conform to the Equipment Rules of Sailing (ERS) 2020-2024, the relevant Class Rules, and these Sailing Instructions.
- 1.3 RRS 44.1 will be changed as follows: so that all reference to “two turns” is replaced by “one turn”.

2. ENTRIES

Racing is open to all yachts entered in the Vasco da Gama Ocean Race 2021.

3. DIVISIONS

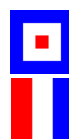
- 3.1 Keelboats will be divided into divisions according to the Vasco da Gama Ocean Race 2021 NOR.

4. STARTS


- 4.1 1st Start : ORC
- 4.2 2nd Start :PHRF
- 4.3 The warning signal for the 1st start will be made not before 13h55. The starting signal for the 1st start will be the warning signal for the next start.

5. CLASS FLAGS

- 5.1 First Start : ORC FLAG W
- 5.2 Second Start : PHRF FLAG T



6. STARTING PROCEDURE

- 6.1 There will be no General Recall. Any yacht deemed over the start line before the starting signal and not returning to restart correctly will be scored OCS. The Race Officer will signal this by a second sound signal after the starting sound signal as well as raising the X flag . The X flag will be lowered once all yachts OCS at the time of the starting signal have returned, or one minute before the start of the next division. The Race Officer will attempt to communicate this to the offending yachts by hailing or radio but this is not mandatory.

7 COURSES

7.1 The course to be sailed will be indicated by the following pennants:



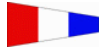
7.1.1 North Easterly (all marks to starboard)

Start between Bridge boat and the yellow cylindrical mark, then proceed to M3, M2, M1, M3, M2, M1 and finish between the Bridge boat and the yellow cylindrical mark.



7.1.2 South Westerly (all marks to port)

Start between Bridge boat and the yellow cylindrical mark, then proceed to M1, M2, M3, M1, M2, M3 and finish between the Bridge boat and the yellow cylindrical mark.



7.1.3 Southerly / South Easterly (all marks to starboard)

Start between Bridge boat and the yellow cylindrical mark, then proceed to M1, M2, M3, M1, M2, M3 and finish between the Bridge boat and the yellow cylindrical mark.

7.2 Shortened Course: Should a race be shortened, the finish shall be between the Bridge boat and a nearby mark.

8 MARKS

8.1 All turning marks will be red cylindrical marks.

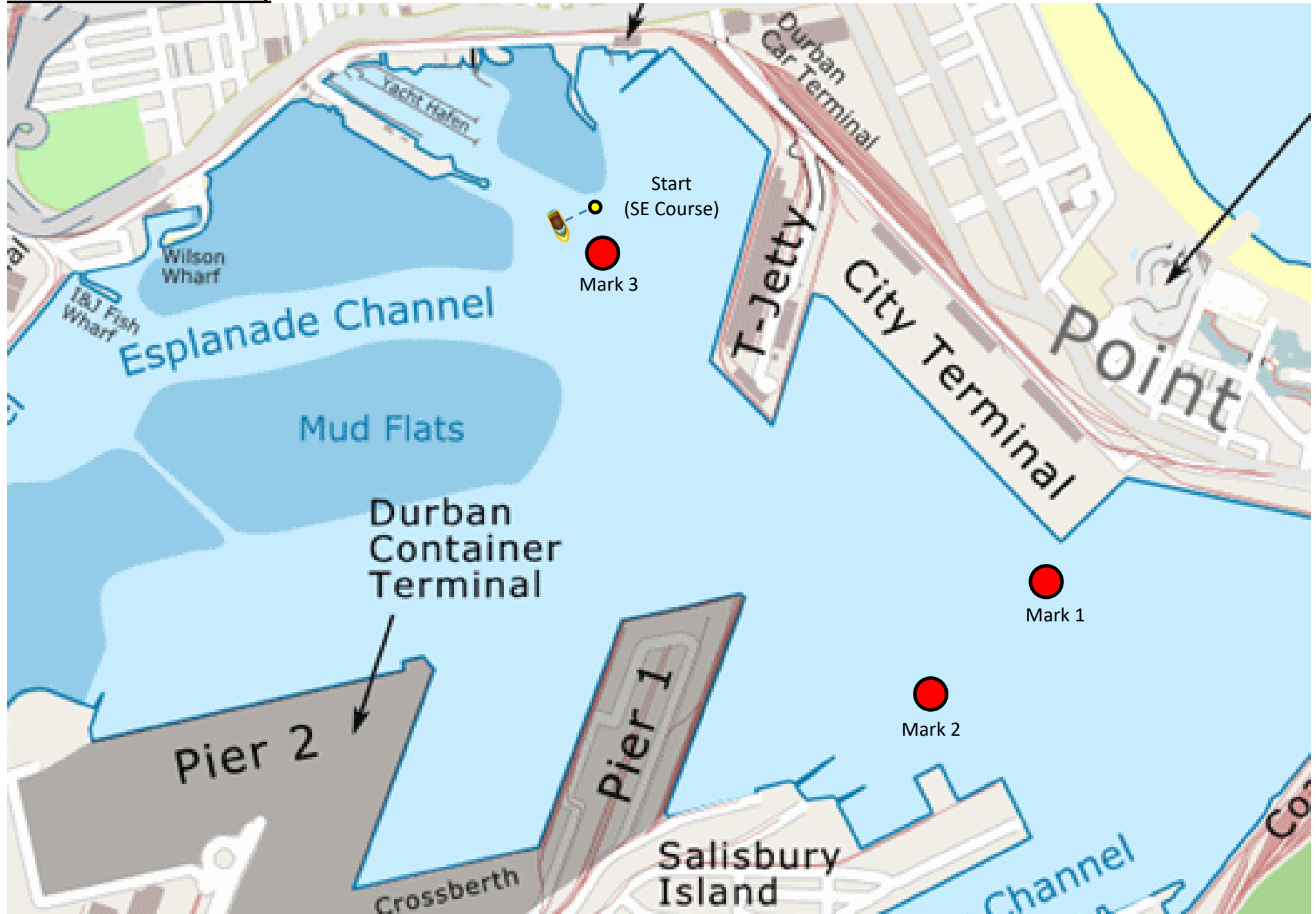
8.2 The Start mark and Finish mark will be a yellow cylindrical mark.

8.3 S1 and E2 are to be considered marks of the course and passed to the deep-water side of the sandbank.

9 RATINGS

9.1 The rating systems shall be used as specified in the Vasco da Gama Ocean Race 2021 NOR.

Course Card - South Easterly



Course Card – North Easterly/South Westerly

